



The World Leader in Attachment Innovation

Auger Systems and Earth Drills

X2100 - 17 EARTH DRILL
 MINI-EXCAVATORS 3,300 – 6,600 LB
 NOT SUITABLE FOR SKIDSTEER LOADERS

X2700 - 25 EARTH DRILL
 MINI-EXCAVATORS 5,500 – 9,900 LB
 SKIDSTEER LOADERS UP TO 65 HP, LOW FLOW



MINI EXCAVATORS
3,300 - 6,600 LB

S4 AUGERS
4 in. - 20 in. Dia

- Torque Range: 612 – 2,100 ft-lb
- Oil Pressure Range: 1,015 – 3,481 psi
- Oil Flow Range: 7 – 17 gpm
- Speed Range: 36 – 87 rpm
- Unit Height: 23 in.
- Unit Diameter: 8 in.
- Unit Weight: 106 lbs
- Hitch Options: Single Pin Hitch, Double Pin Hitch, Cradle Hitch
- Output Shaft Std: 2 in. Hex
- Output Shaft Opt: 2.56 in. Round, 2.25 in. Square



Single-Pin Hitch



Double-Pin Hitch



Double-Pin Cradle Hitch

GUIDE TO DRILLING PERFORMANCE*

AUGER DIA	DRILLING DEPTH IN FEET**		
	SOFT	MEDIUM	HARD
4 in	8 ft	8 ft	7 ft
6 in			
8 in			
9 in			
10 in	▼	▼	▼
12 in	8 ft	8 ft	7 ft
14 in	8 ft	7 ft	6 ft
15 in	7 ft	6 ft	6 ft
16 in	6 ft	6 ft	5 ft
18 in	6 ft	5 ft	5 ft
20 in	5 ft	5 ft	4 ft



2.56 in. round



2.25 in. square



2 in. Hex



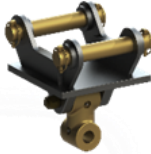
SKIDSTEER LOADERS
LOW FLOW
UP TO 65 HP

S4 AUGERS
4 in. - 30 in. Dia

- Torque Range: 888 – 2,665 ft-lb
- Oil Pressure Range: 1,160 – 3,481 psi
- Oil Flow Range: 10 – 25 gpm
- Speed Range: 50 – 126 rpm
- Unit Height: 26 in.
- Unit Diameter: 10 in.
- Unit Weight: 161 lbs
- Mounting Frame: Fixed Centre Cradle, Side Shift Cradle
- Output Shaft Std: 2 in. Hex
- Output Shaft Opt: 2.56 in. Round, 2.25 in. Square



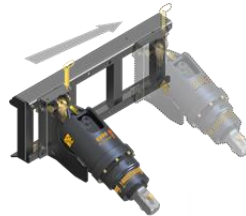
Single-Pin Hitch



Double-Pin Hitch



Double-Pin Cradle Hitch



Skid Steer Hitch

GUIDE TO DRILLING PERFORMANCE*

AUGER DIA	DRILLING DEPTH IN FEET**		
	SOFT	MEDIUM	HARD
4 in	10 ft	9 ft	8 ft
6 in			
8 in			
9 in			
10 in			
12 in			
14 in			
15 in			
16 in			
18 in			
20 in	▼	▼	▼
22 in	10 ft	9 ft	8 ft
24 in	10 ft	9 ft	8 ft
28 in	8 ft	7 ft	6 ft
30 in	6 ft	5 ft	5 ft



2.56 in. round



2.25 in. square



2 in. Hex

X3300 - 30 EARTH DRILL
MINI-EXCAVATORS 6,600 – 11,000 LB.
SKIDSTEER LOADERS UP TO 80 HP, LOW FLOW TO STANDARD FLOW



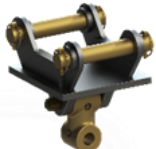
MINI EXCAVATORS
6,600 - 11,000 LB

S4 AUGERS
4 in. - 36 in. Dia

- Torque Range: 1,106 – 3,318 ft-lb
- Oil Pressure Range: 1,160 – 3,481 psi
- Oil Flow Range: 13 – 30 gpm
- Speed Range: 42 – 97 rpm
- Unit Height: 26 in.
- Unit Diameter: 10 in.
- Unit Weight: 166 lbs
- Hitch Options: Single Pin Hitch, Double Pin Hitch, Cradle Hitch
- Output Shaft Std.: 2 in. Hex
- Output Shaft Opt.: 2.56 in. Round, 2.25 in. Square



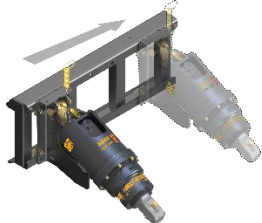
Single-Pin Hitch



Double-Pin Hitch



Double-Pin Cradle Hitch



Skid Steer Hitch

GUIDE TO DRILLING PERFORMANCE*

AUGER DIA	DRILLING DEPTH IN FEET**		
	SOFT	MEDIUM	HARD
4 in	13 ft	12 ft	10 ft
6 in			
8 in			
9 in			
10 in			
12 in			
14 in			
15 in			
16 in			
18 in			
20 in			
22 in	↓	↓	↓
24 in	13 ft	12 ft	10 ft
28 in	10 ft	9 ft	8 ft
30 in	8 ft	8 ft	7 ft
32 in	7 ft	6 ft	5 ft
36 in	5 ft	5 ft	4 ft



2.56 in. round



2.25 in. square



2 in. Hex

S4 AUGERS

SideTool Augers feature extra-long flighted sections of shallow pitch flights. Earth, Tungsten and Extra Dig variations are available.

Available in the following diameters:

- | | | | |
|-------|-------|-------|-------|
| 4in. | 12in. | 20in. | 32in. |
| 6in. | 14in. | 22in. | 36in. |
| 8in. | 15in. | 24in. | |
| 9in. | 16in. | 28in. | |
| 10in. | 18in. | 30in. | |



SHOWN:
S4 4in. Dia.
4 ft. length**
Shock Lock™



SHOWN:
S4 36in. Dia.
4 ft. length**
Shock Lock™



S4 EXTENSIONS

S4 Auger Extensions are available in 2ft. & 4ft. lengths



SHOWN:
S4 4ft.
Extension

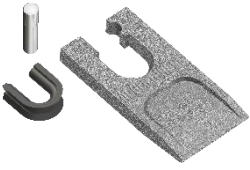
**Auger lengths stated include fitted wear parts

SHOCK LOCK™
Tooth Locking System

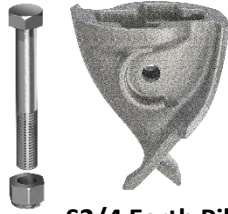
DON'T LEAVE YOUR TEETH DOWN THE HOLE!



EARTH WEAR PARTS



**S2/4 Shock Lock™
Earth Tooth
33-9121-KIT**

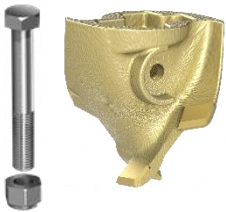


**S2/4 Earth Pilot
33-9203-KIT**

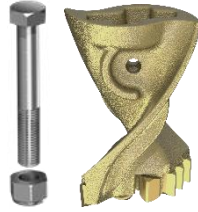
EARTH Shock Lock™

Best suited to soft grounds like earth and clay

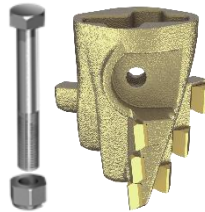
TUNGSTEN WEAR PARTS



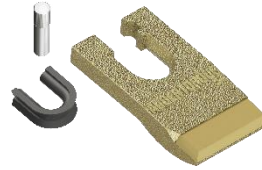
**S4
Flat Tungsten Pilot
33-9222-KIT**



**S4
Tungsten Pilot
33-9204-KIT**



**S4
Extra Dig Pilot
33-9212-KIT**



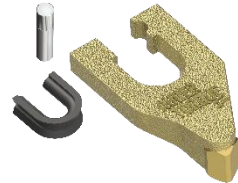
**S4 Shock Lock™
Flat Tungsten Tooth
33-9124-KIT**



**S4 Shock Lock™
Flat Tungsten Chisel
33-9123-KIT**



**S4 Shock Lock™
Tungsten Tooth
33-9122-KIT**



**S4 Shock Lock™
Tungsten Chisel
33-9122-KIT**



**S4 Shock Lock™
Tungsten Chisel
33-9125-KIT**



**S4 Shock Lock™
Tungsten Chisel
33-2023-KIT**

FLAT TUNGSTEN Shock Lock™

Best suited to soft abrasive grounds like sand, to help reduce wear.

FLAT TUNGSTEN CHISEL Shock Lock™

Used in conjunction with standard full width Flat Tungsten Teeth. Improves cutting where low down pressure machines are being used, i.e. Mini Loaders, small Skid Steer Loaders & small Excavators. Must only be fitted to the inside tooth holders with standard full width Flat Tungsten Teeth being fitted on the outer most holders.

TUNGSTEN Shock Lock™

Best used in dry, hard or medium ground conditions where floating rocks may be encountered. The perfect all-rounder if you are not sure about what you might encounter.

TUNGSTEN CHISEL Shock Lock™

Used in conjunction with standard full width Tungsten Teeth. Improves cutting where low down pressure machines are being used, i.e. Mini Loaders, small Skid Steer Loaders & small Excavators. Must only be fitted to the inside tooth holders with standard full width Tungsten Teeth being fitted on the outer most holders.

EXTRAS



Pin & Clip
2.25" Square
30-0002-KIT



Pin & Clip
2" Hex
30-0003-KIT



Pin & Clip
2.56" Round
30-0004-KIT



S1/2/4 Shock Lock™
Tooth Holder
33-1010



S4 Pilot
Extension
33-4106-KIT



S4 Drive Lug
33-4102



S4 Drive Lug
33-4105



S4 Drive Lug
33-4110

EXTRA DIG PILOT

A stronger Pilot for more demanding ground conditions